

Flange Version

Flange sizes DN15, DN20 and DN25 - Type EFK-F & EFG-F

DESCRIPTION

The new EBE ECOFLOW venturi orifice steam trap range is designed to meet the rigorous requirements demanded by today's industrial plant users. Developed on a modular concept, the trap encompasses a wide range of capacities, from minimal condensate flow requirements on line drainage and trace heating systems, through to the high flow volumes and variable loads of process heating applications. The trap's unique innovative design allows for both these conditions to be serviced within the same flanged body.

The new EBE ECOFLOW is the first fully cast, flanged, variable orifice steam trap to be available to the market. Delivering permanent solutions for all steam trapping requirements. The venturi orifice technology forms part of your total steam system pipework. With no moving parts it is integral with the system and will never need replacement.

ASSEMBLY

PART NO. DESCRIPTION

See table page two **Flanged Body**
DIN 1.4408 (ASTM A351 - CF8M Equivalent)

1140 Filter Cap
ASTM 304 SS (DIN 1.4308 Equivalent)

1150 Top Cap (EFK)
1160 Top Cap (EFG)
ASTM 304 SS (DIN 1.4308 Equivalent)

1190 Principal Filter
400 or 800 Micron SS reinforced 304 SS and 304L SS
(DIN 1.4301 and 1.4306 Equivalent)

1195 Optional Contaminated System Filter
800 Micron SS reinforced 304 SS
(DIN 1.4301 Equivalent)

1200 Strainer Gasket
Metal reinforced graphite

1210 Top Cap Gasket
Metal reinforced graphite

1220 Variable Nozzle Gasket (EFK)
1230 Variable Nozzle Gasket (EFG)
Metal reinforced graphite

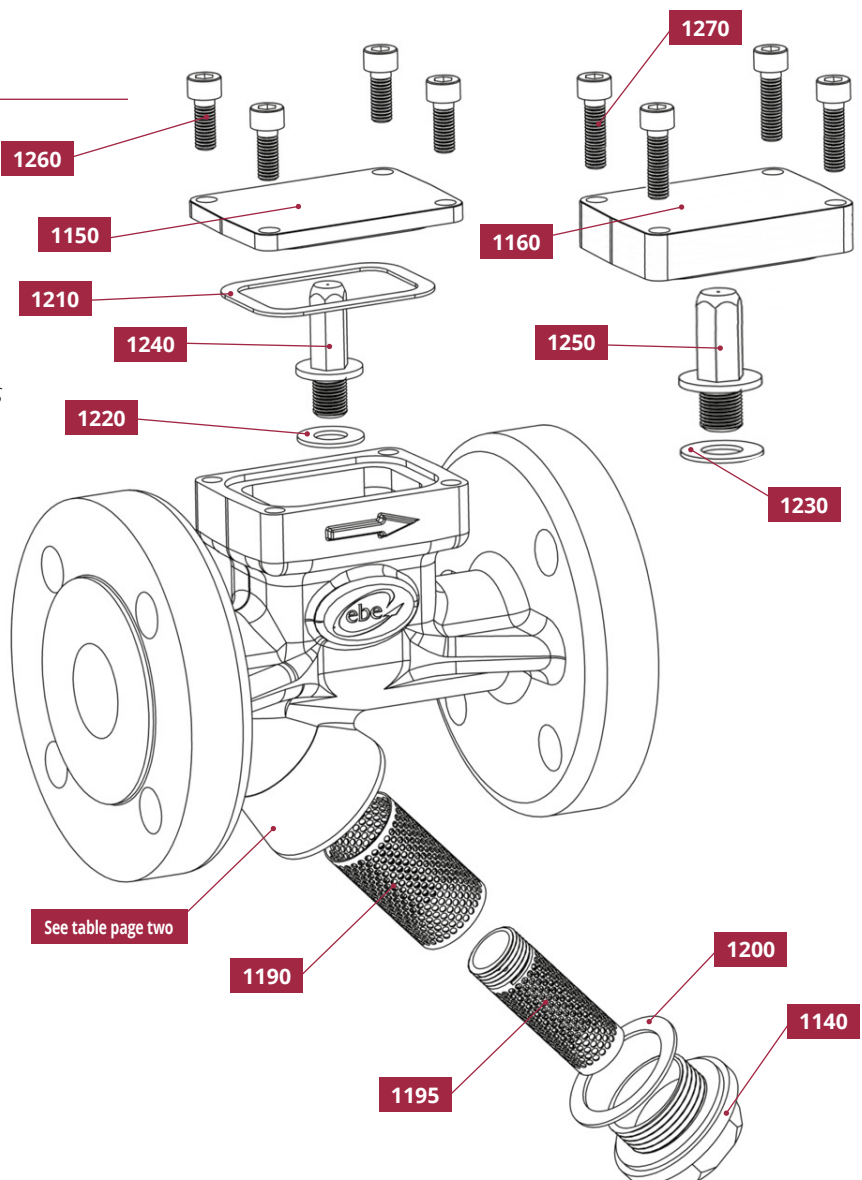
1240 Variable Nozzle (EFK)
1250 Variable Nozzle (EFG)
ASTM 304 SS (DIN 1.4404 Equivalent)

1260 Top Cap retaining screws (EFK)
M6 x 16 hex socket heads (ISO 4762 / DIN912)

1270 Top Cap retaining screws (EFG)
M6 x 25 hex socket heads (ISO 4762 / DIN912)

FEATURES

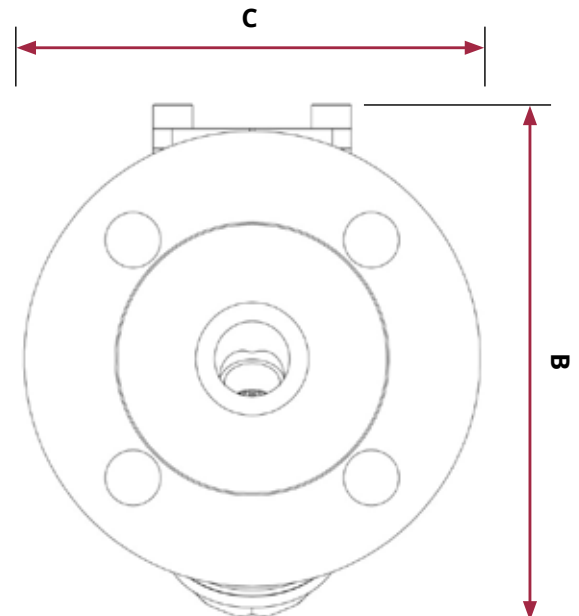
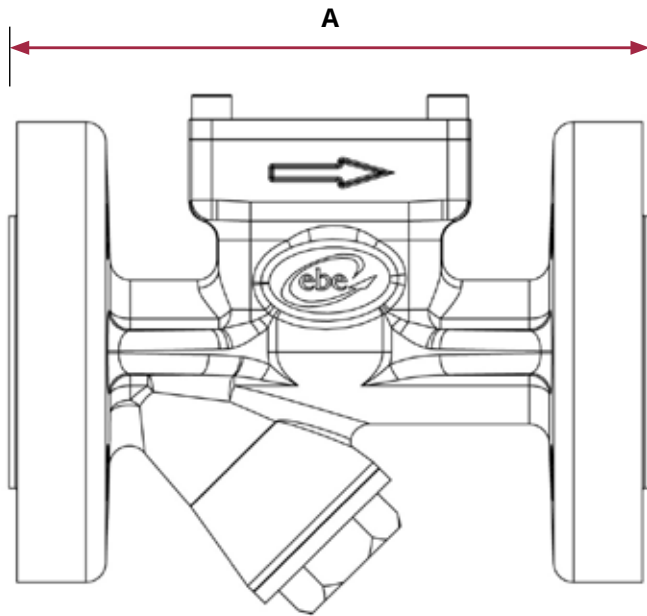
- Unique modular design for low and high condensate flow
- Multiple nozzle configurations designed for optimum efficiency at operating point.
- Fully cast flanged housing eliminates any weld joints and guarantees pressure integrity
- Flexible filtration options, increased secondary filtration available for contaminated systems
- Graphite seals metal bonded and fully encapsulated to eliminate leakages
- All face to face dimensions in accordance with ISO 26554
- In line constructions allows for removal and cleaning of filters and nozzles



Flange Version

Flange sizes DN15, DN20 and DN25 - Type EFK-F & EFG-F *continued*

DIMENSIONS AND WEIGHTS



Type EFK-F						
Part No.	Size	Connection	A mm	B mm	C mm	Approx Weight
1020	DN15	Flange Form B PN40	150	130	95	3.6 kg
1040	DN20	Flange Form B PN40	150	130	105	3.9 kg
1060	DN25	Flange Form B PN40	160	130	115	4.4 kg

Type EFG-F						
Part No.	Size	Connection	A mm	B mm	C mm	Approx Weight
1010	DN15	Flange Form B PN40	150	145	95	3.7 kg
1030	DN20	Flange Form B PN40	150	145	105	4.0 kg
1050	DN25	Flange Form B PN40	160	145	115	4.5 kg

SIZES AND CONNECTIONS

Face to face dimensions in conformance to DIN EN 26554 (ISO 6554) Series 1

Flanges Conforming to EN 1092-1 form B PN40 as standard
Higher pressure flanges or ASME available on request at additional cost

PRESSURE / TEMPERATURE LIMITS

PMA (Maximum Allowable Pressure)	90 bar g
TMA (Maximum Allowable Temperature)	500°C
PMO (Maximum Operating Pressure)	76 bar g
TMO (Maximum Operating Temperature)	350°C
Cold hydraulic test pressure	100 bar g

CERTIFICATION

- All steam traps carry a ten year performance guarantee
- Material inspection Certificate, in accordance to DIN EN 10204: 3:1, available on request
- Pressure test certificates, in accordance to European Pressure Equipment Directive 2014/68/EU, available on request

All certification delivered at additional cost
Certification requirements to be stated at time of order

We reserve the right to make technical and design changes to the descriptions and specifications in our Data Sheets, catalogues or similar sales documents in the same or better quality and we may exchange parts and components against such of same or better technical standards; for the Customer no rights will arise resulting from this Conduct.

PERFORMANCE DATA

Steam trap body	Max flow rate	
	@ 10 bar	@ 20 bar
EFK (<i>drip leg/trace heating</i>)	40kg/hr	55kg/hr
EFK (<i>Process applications</i>)	1000kg/hr	1400kg/hr
EFG	11500kg/hr	15500kg/hr

Note:

- EFG duty conditions available as standard in DN25, DN40 and DN50 flanged housings. Other flange sizes available upon request
- Pressures above 20 bar, duty conditions are available upon request

Optional extras

ISOJAG Nomex material insulation jacket. See separate technical Data Sheet for specifications

Contaminated system filter for low flow and small nozzle sizes